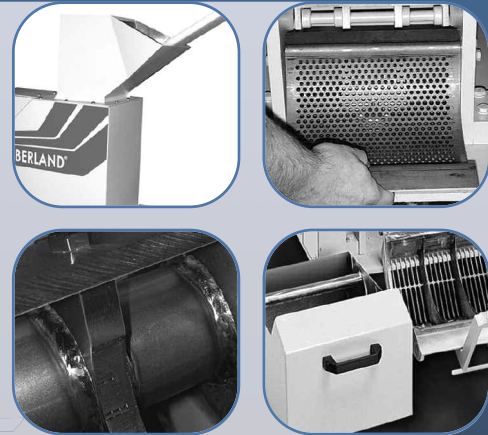


20 SERIES

Sprue and Runner Granulators



20 Series Offers Compact Granulation

The 20 Series granulators are ideal for reject components from the injection, blow molding, and extrusion processes. The compact design makes them easily movable and the sound enclosure controls noise and permits access. Engineered for hand feed, robot feed or conveyor feed, these low speed granulators are packed full of standard features.

These sound-attenuating granulators are available in three models—2025, 2035 and 2045. All provide excellent quality regrind with the added advantage of reduced maintenance costs.

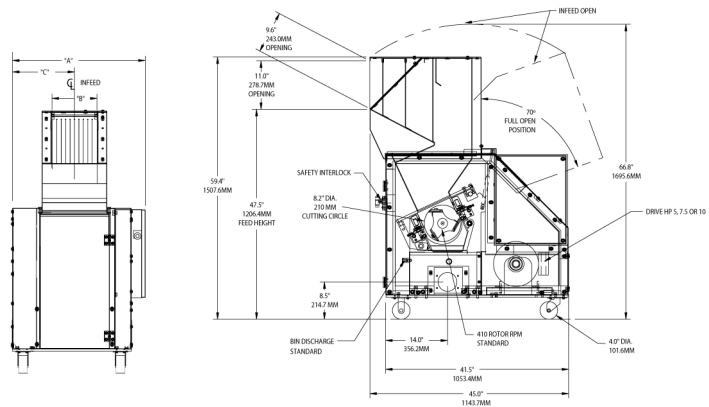
Model	2025	2035	2045
Cutting Circle	210mm (8.2" dia.)		
Avg Throughput (lbs/hr)	58kg (123 lbs/hr)	78 kg (172 lbs/hr)	100 kg (221 lbs/hr)
Cutting Chamber	203 mm x 254 mm (8" x 10")	203 mm x 356 mm (8" x 14")	203 mm x 457 mm (8" x 18")
Rotor Knives	3-knife open-scooped with rotating end discs		
Discharge	Manual bin standard		
Motor	7.5kW (10 HP) TEFC standard		
Base	Full machine sound enclosure with casters		
Electrical Components	Start/stop button, with complete safety interlocks		
Controls	IP55 CE Standard		
Feed Height (manual chute)	1206mm (47.5")		
Feed Height (front robot/conveyor chute)	1502mm (59.1")		
Feed Height (rear robot/conveyor chute)	1742mm (68.6")		
Overall Height (manual chute model)	1507mm (59.4")		
Overall Length	1144mm (45.0")		
Overall Width	770mm (30.3")	871mm (34.3")	973mm (38.3")
Weight	553kg (1220 lbs)	635kg (1400 lbs)	730kg (1610 lbs)

Features

- Pivoting hopper, drop-down removable screen cradle and machined, bolted cutting chamber simplifies cleaning and maintenance
- Low profile, sound-attenuated infeed system for robot, hand or conveyor feed applications
- HCHC knives manufactured in-house utilizing Cumberland's proprietary process for heat-treating ensure durability and long life
- Oversized solid flywheel

Options

- Motor: 5.5 to 7.5 kW (7.5 to 10 HP) TEFC motors
- Discharge: 32, 38, 51, or 64 mm (1.25", 1.5", 2" or 2.5") vacuum take-off
- Knives: D2 components and wear-resistant package for abrasive applications
- Modular feed chutes



Global Headquarters

Cumberland Schaumburg
 1100 E. Woodfield Road
 Suite 550
 Schaumburg, IL 60173
 Tel: +1 (262) 641 8600
 Fax: +1 (262) 641 8653

Cumberland New Berlin
 2900 S 160th Street
 New Berlin, WI 53151
 Tel: +1 (262) 641 8600
 Fax: +1 (262) 641 8653

Cumberland Suzhou
 109 Xingpu Road SIP
 Suzhou, China 215126
 Tel: +86 512 8717 1919
 Fax: +86 512 8717 1916

Cumberland Warsaw
 ul. Działkowa 115
 02-234 Warszawa
 Tel: + 48 22 390 9720
 + 48 22 390 9721
 + 48 22 390 9722
 Fax: + 48 22 390 9724

Cumberland India
 Gat No. 191/1, Sandbhor Complex,
 Mhalunge, Chakan, Tal Khed,
 Dist. Pune 410501, India
 Tel: +91 21 35329112
 Fax: +91 20 40147576

