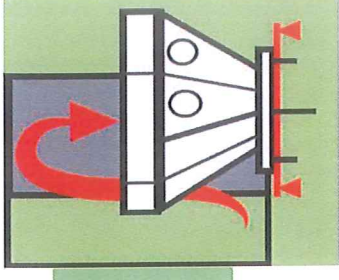


# DOSING FKW WEIGHING DOSING



The weighing dosing units **FKW-Spiroflux®** comprise one or several hoppers equipped with « cup » valves or dosing screws with sheath.

Dosing by batchwise weighing of several products in the form of granules, crushed material, powders, comprising an effective blending function; driven by control box equipped with a program with touch screen.  
**Please consult us to define your project.**

## WEIGHING DOSING UNIT – TYPE DPX

Compact and user-friendly dosing unit, from 2 to 4 products.

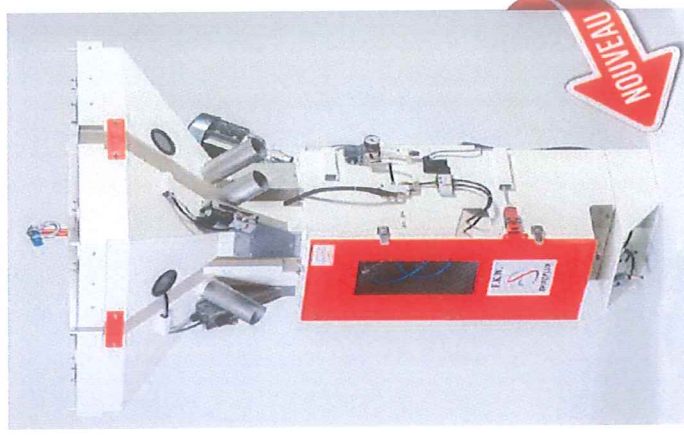
These dosing units can be mounted directly on the machine or on a frame on the floor.

The products, i.e. granules or crushed material, are filled by gravity into the weighing hopper, by the means of a 'cup' valve (anti-jamming device).

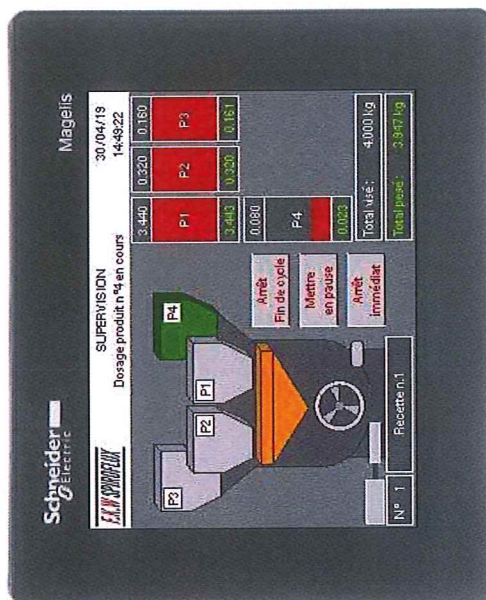
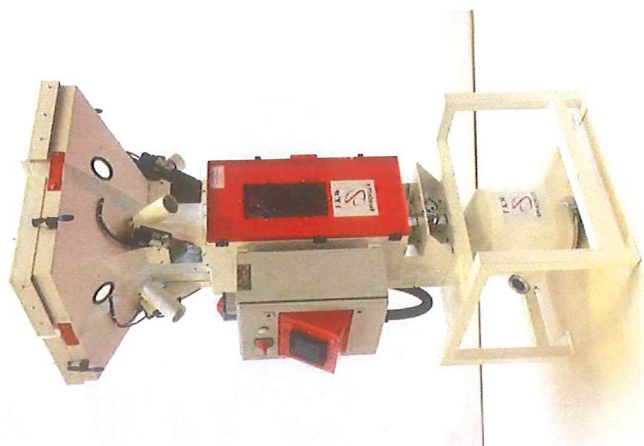
The synoptic displayed on the touch screen makes the driving easier.

Optional possibility, to drive the loaders for the feeding of the DPX hoppers and the loader for the emptying of the dosing unit to feed the machine with the mixture.

Supply in 400 Volts three-phase without neutral.



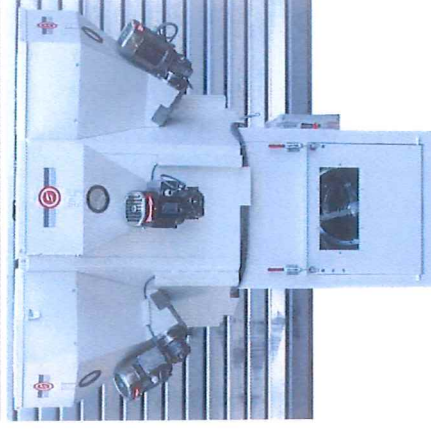
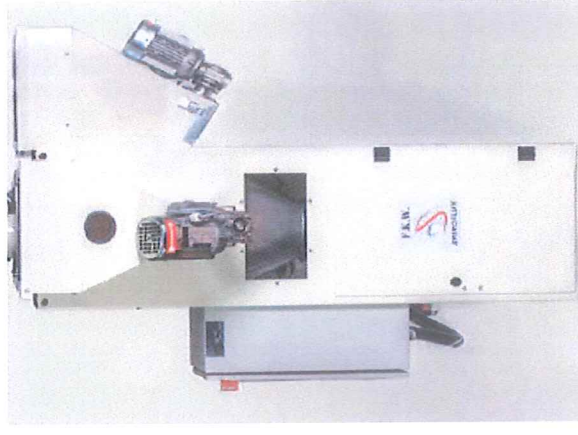
| Type                                       | Number of materials | Code        |
|--|---------------------|-------------|
| DOSING UNIT DPX 06/440 ON MACHINE          | 4                   | CAT79214000 |
| DOSING UNIT DPX 06/440 WITH VALVE ON FRAME |                     | CAT79214001 |
| DOSING UNIT DPX 06/330 ON MACHINE          | 3                   | CAT79213000 |
| DOSING UNIT DPX 06/330 WITH VALVE ON FRAME |                     | CAT79213001 |
| DOSING UNIT DPX 06/220 ON MACHINE          | 2                   | CAT79212000 |
| DOSING UNIT DPX 06/220 WITH VALVE ON FRAME |                     | CAT79212001 |



Synoptic of weighing dosing unit on SCHNEIDER touch screen.

# WEIGHING DOSING UNIT SPIROMIX® – TYPE DP

Weighing dosing unit big throughput, user-friendly dosing unit, from 2 to 6 products. These dosing units can be mounted on a frame on the floor or an existing platform. The products, i.e. granules or crushed material, are filled into the weighing hopper, by the means of a dosing screw. The synoptic displayed on the touch screen makes the driving easier. Optional possibility, to drive the loaders for the feeding of the DP hoppers and the loader for the emptying of the dosing unit to feed the machine with the mixture. Supply in 400 Volts three-phase without neutral.



| Type    | Number of materials | Code        |
|---------|---------------------|-------------|
| DP 500  | 2                   | CAT79220220 |
|         | 3                   | CAT79220330 |
|         | 4                   | CAT79220440 |
|         | 5                   | CAT79220550 |
|         | 6                   | CAT79220660 |
|         | 2                   | CAT79230220 |
| DP 1000 | 3                   | CAT79230330 |
|         | 4                   | CAT79230440 |
|         | 5                   | CAT79230550 |
|         | 6                   | CAT79230660 |