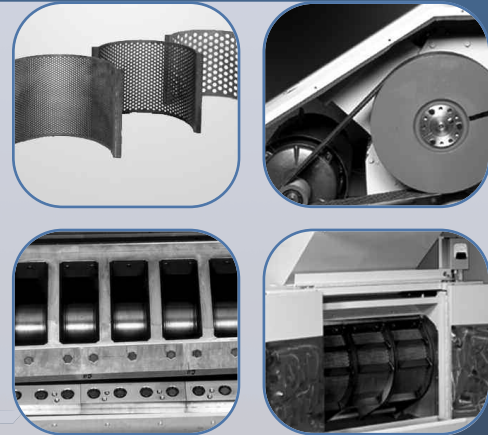


5060/5090 SERIES

Tangential Granulators



Reclaim Large, Bulk Parts With a Medium-Sized Granulator

Tangential Series granulators come in two sizes—the 5060 and the 5090. The special cutting chamber designs draw the products into the lower bed knife, where the cutting action traps the item between the rotor knife and bed knife “jaw”.

They offer customers a solution to granulation problems by minimizing part bouncing and optimizing material processing for large bulky parts. In this way, the larger items from rotational molding, large injection molding, and blow molding are more easily accepting, ingested, and processed.

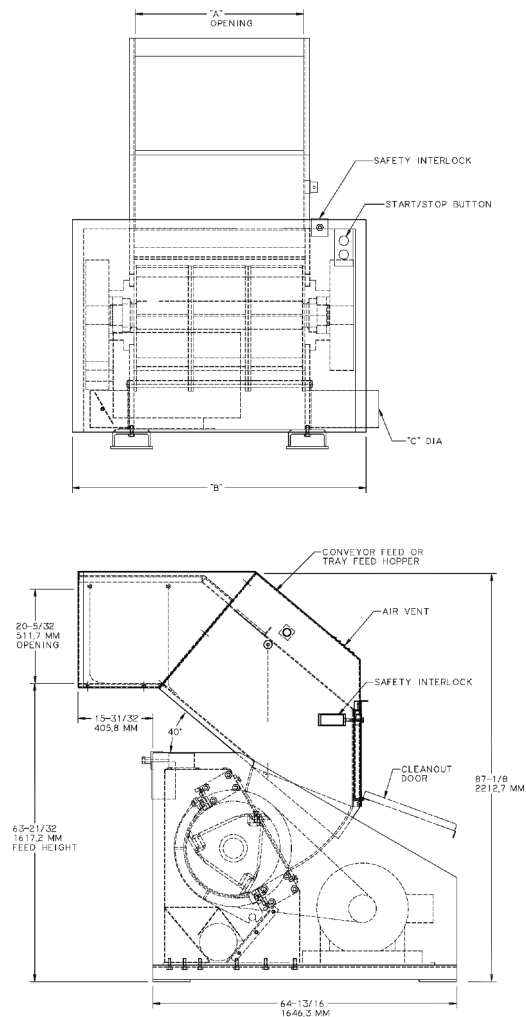
www.cumberlandeurope.com

Model	A (mm)	B (mm)	C (mm)
5060TF	610	1336	150
5090TF	915	1590	150

Motor	Throughput
30 HP, TEFC, 1800 rpm	630 kg
40 HP, TEFC, 1800 rpm	907 kg

Features

- Angled infeed for easy hand or conveyor feed
- Convenient lower feed height of 1600 mm
- Fully sound dampened to 85dBA or less for most applications
- Tangential feed design for improved application versatility
- Machine bolted/doweled assembly for ease of cleaning and replacement
- Dual bed knives-counter slant, reversible and adjustable doubling knife life
- 3 knife slant cut rotor (steep angle) including solid knife carriers
- Open design-scooped rotor for maximum air flow and ingestion of product
- Large 508mm cutting circle on rotor for efficient processing of large bulky parts
- High carbon, high chrome (D2) rotor and bed knives
- Swing down reversible screens with solid edges doubling screen life and providing easy maintenance
- Airveyor discharge standard
- TEFV design—1500 RPM motor with sliding motor base
- Star/Delta starter etc. housed in IP55 enclosure. CE safety equipment
- Safety relay and low voltage push buttons provides safer design



Global Headquarters

Cumberland Schaumburg
 1100 E. Woodfield Road
 Suite 550
 Schaumburg, IL 60173
 Tel: +1 (262) 641 8600
 Fax: +1 (262) 641 8653

Cumberland New Berlin
 2900 S 160th Street
 New Berlin, WI 53151
 Tel: +1 (262) 641 8600
 Fax: +1 (262) 641 8653

Cumberland Suzhou
 109 Xingpu Road SIP
 Suzhou, China 215126
 Tel: +86 512 8717 1919
 Fax: +86 512 8717 1916

Cumberland Warsaw
 ul. Działkowa 115
 02-234 Warszawa
 Tel: + 48 22 390 9720
 + 48 22 390 9721
 + 48 22 390 9722
 Fax: + 48 22 390 9724

Cumberland India
 Gat No. 191/1, Sandbhor Complex,
 Mhalunge, Chakan, Tal Khed,
 Dist. Pune 410501, India
 Tel: +91 21 35329112
 Fax: +91 20 40147576

