



**MANUAL OF OPERATING
CONVEYOR BELT**

At power appears homepage, where you set the operating mode (Manual/Automatic/Time) and where you can access the page of Setup .

F0 Manual	F1 Automatic
F2 Time	F4 Setup



Manual Button



Automatic Button



Time Button



Start Stop Button



Jog Button, pressing this button in any condition, EXCEPT while in alarm, conveyor starts and works until you release the button



Reset Button (It must be pressed for 2 seconds)



Buttons to change the displayed page



Button to enter the configuration page.

MANUAL OPERATION

Pressing the button



you activate the manual function

where pressing



it activate the motor movement, to stop the engine you have to press the F3 button.



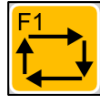
Button where to set the required speed.



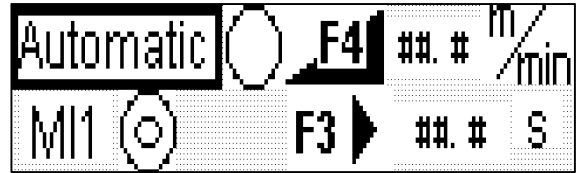
Jog Button.

AUTOMATIC OPERATION

Pressing the button



it activate automatic



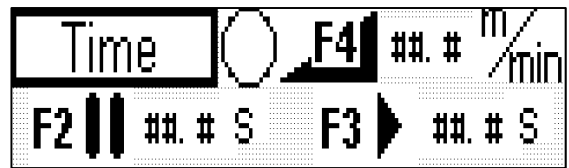
After receipt of external signal, the conveyor begins to run for the time set to F3, then stops and waits for a new signal. This cycle continues until you leave the page by pressing the up arrow.

OPERATION TIME

Pressing the button



it activate the operation



The conveyor starts to run for the time set to F3, than stops for the time set in F2. This cycle continues until you leave the page by pressing the up arrow.

DESCRIPTION PAGES SETUP

From page

F0 Manual	F1 Automatic
F2 Time	F4 Setup

Pressing the button



you enter the Setup

where after entering the password (3675)

and pressing the button



you see the following pages.



Where you can change the acceleration and deceleration ramp.



Where you can change the parameters of the inverter.



Where you set the value conversion between the engine speed, the gear ratio and the maximum frequency of 50Hz.



SIGMA MOTION s.r.l.
 viale Milano, 42
 36075 Montecchio Maggiore (VI)
 +39 0444 607575
 +39 0444 495833
 support@sigmamotion.it

Customer / Cliente **VIRGINIO NASTRI**

Project / Progetto

NASTRO TRASPORTATORE

Drawing number / Numero schema **181111403**

Order no. / Ordine n.

Revision / Revisione **1.0**

Revision of / Revisione di **L.D.**

Revision description / Descrizione revisione

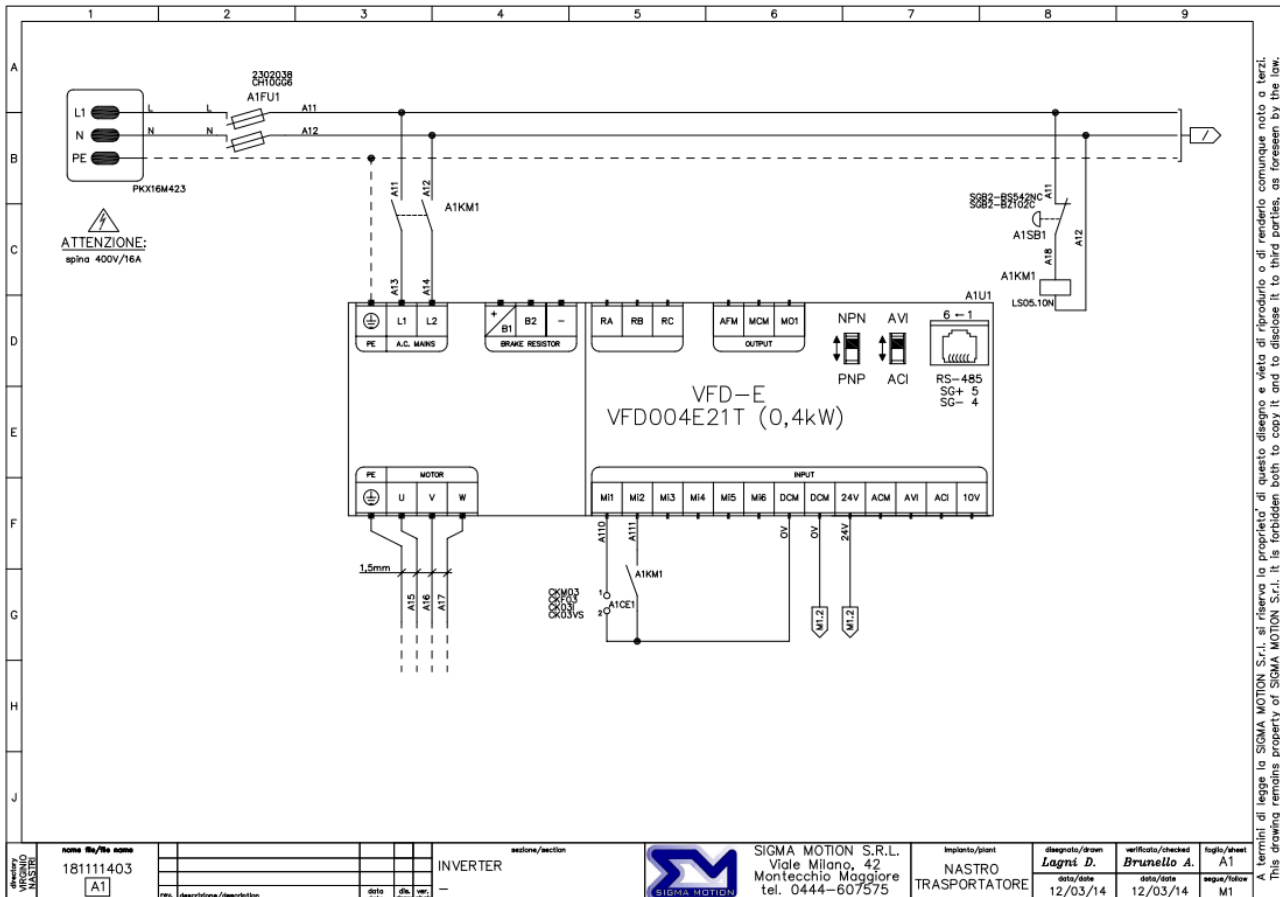
Checked by / Verificato da **A.B.**

Date of revision / Data revisione **12/03/2014**

Accepted / Accettato

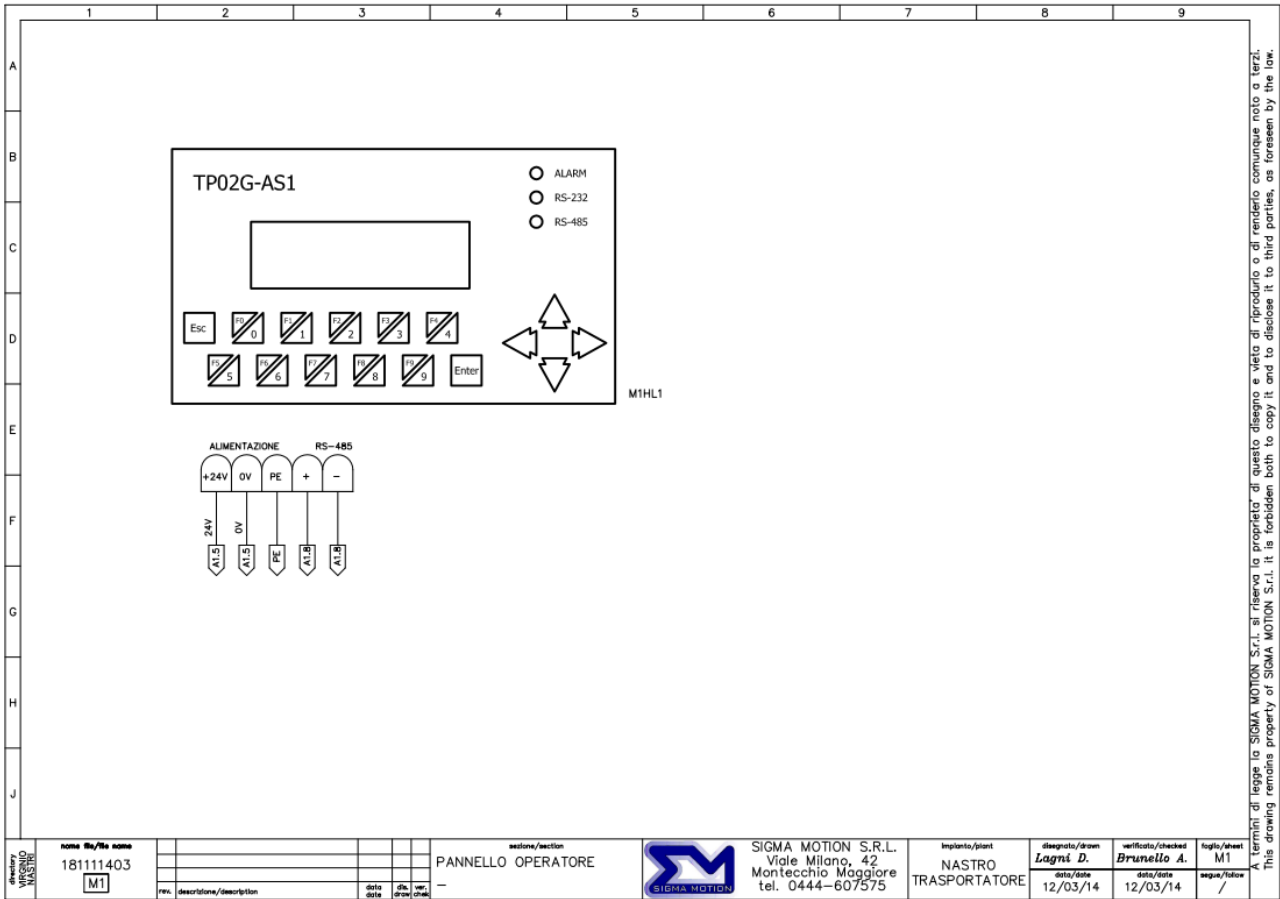
General Comments / Commenti

Stromkreis	Voltage / Tensione	Wire Color / Colore fili	Common wire color / Comune colore fili
Main circuit / Circuito principale Auxiliary devices W.St. / Circuiti ausiliari W.St. Auxiliary devices G.St. / Circuiti ausiliari G.St. External circuit / Circuiti esterni Neutral / Neutro Ground / Terra	1~+N 230 V 50 Hz		



A termini di legge la SIGMA MOTION S.r.l. si riserva la proprietà di questo disegno e vieta di riprodurlo o di renderlo comunque noto a terzi.
 This drawing remains property of SIGMA MOTION S.r.l. It is forbidden both to copy it and to disclose it to third parties, as foreseen by the law.

nome file/schema 181111403	sezione/section INVERTER	disegnato/drawn Logni D.	verificato/checked Brunello A.	data/date 12/03/14	data/date 12/03/14	pagine/total A1
descrizione/description A1		data/date 12/03/14	data/date 12/03/14	segna/follow M1		



disegnato
VIRGINIO
NASTRO

nome file/ris nome
181111403
M1

rev.	description/description	data date	dis. drawn	ver. check

sezione/section
PANNELLO OPERATORE



SIGMA MOTION S.R.L.
Viale Milano, 42
Montecchio Maggiore
tel. 0444-607575

impianto/plant
NASTRO
TRASPORTATORE

disegnato/drawn
Lagni D.
data/date
12/03/14

verificato/checked
Brunello A.
data/date
12/03/14

foglio/sheet
M1
segua/follow
/

A termini di legge la SIGMA MOTION S.r.l. si riserva la proprietà di questo disegno e vieta di riprodurlo o di renderlo comunque noto a terzi.
This drawing remains property of SIGMA MOTION S.r.l. It is forbidden both to copy it and to disclose it to third parties, as foreseen by the law.