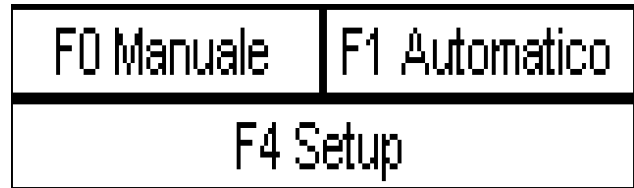




**FUNCTION MANUAL  
CAROUSEL**

At power you see the main page, for changing the operating mode (Manual/Automatic) and it's possible enter in Setup Page.



Manual Button.



Automatic Button.



Button to enter in the page of configuration.



Reset Button (it must be pressed for 2 seconds)

## MANUAL FUNCTION

When press the button



we active manual function were is possible to press



We activate start motor carousel, for stop motor re-press button F3.

From the panel you can see if the motor carousel rotates if the rim is completely black

## AUTOMATIC FUNCTION

When press the button



we active automatic function



The conveyor belt rotate (if the NASTRO rim is completely black) and start count mould shots.

When il arrive at the end shot the conveyor rotate for a defined time, then it stops and start the carousel motor until it reaches the limit switch. Then he starts again the conveyor belt

## DESCRIPTION OF SETUP PAGES

From page

F0 Manuale	F1 Automatico
F4 Setup	

Pressing the button  we enter in setup page, where insert the password (3675)

and pressing the button



Password F4
####

displays the following pages.

Setup			
ACC	DEC	Val: ####. #	SET

Where you can change the acceleration and deceleration ramp.

Setup			
Pr: #####	Val: #####	SET	

Where it is possible to change inverter parameters.

Conta battute F6	####	pz	
Timer scarico nastro F7	##. #	S	

Where it is possible to change mould shots for the change box, and the time of delay to start carousel motor.



**SIGMA MOTION s.r.l.**

viale Milano, 42  
36075 Montecchio Maggiore (VI)  
+39 0444 607575  
+39 0444 495833  
support@sigmamotion.it

*Customer / Cliente*      **VIRGINIO NASTRI**

*Project / Progetto*

**NASTRO TRASPORTATORE**

*Drawing number / Numero schema*      **181111404**

*Order no. / Ordine n.*

*Revision / Revisione*      **1.0**

*Revision of / Revisione di*      **L.D.**

*Revision description / Descrizione revisione*

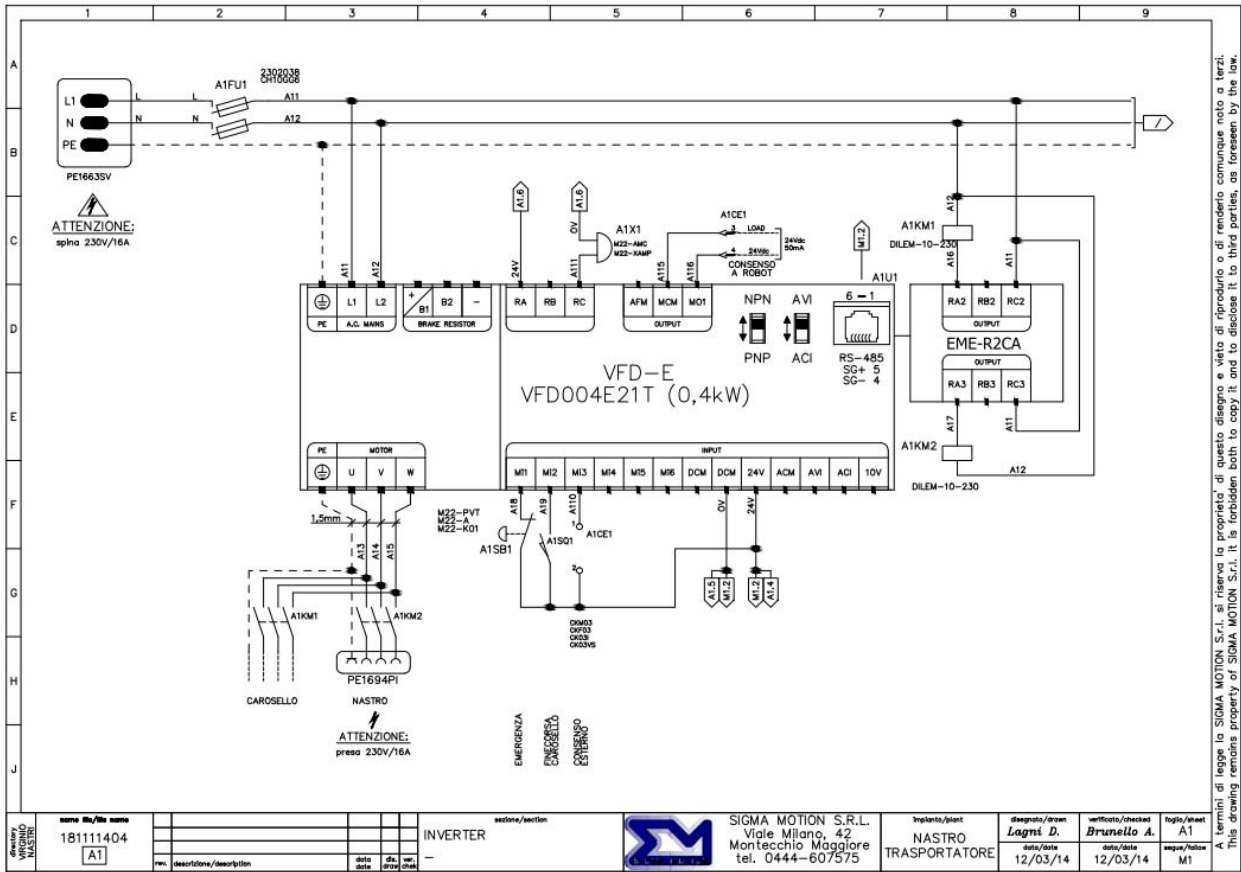
*Checked by / Verificato da*      **A.B.**

*Date of revision / Data revisione*      **12/03/2014**

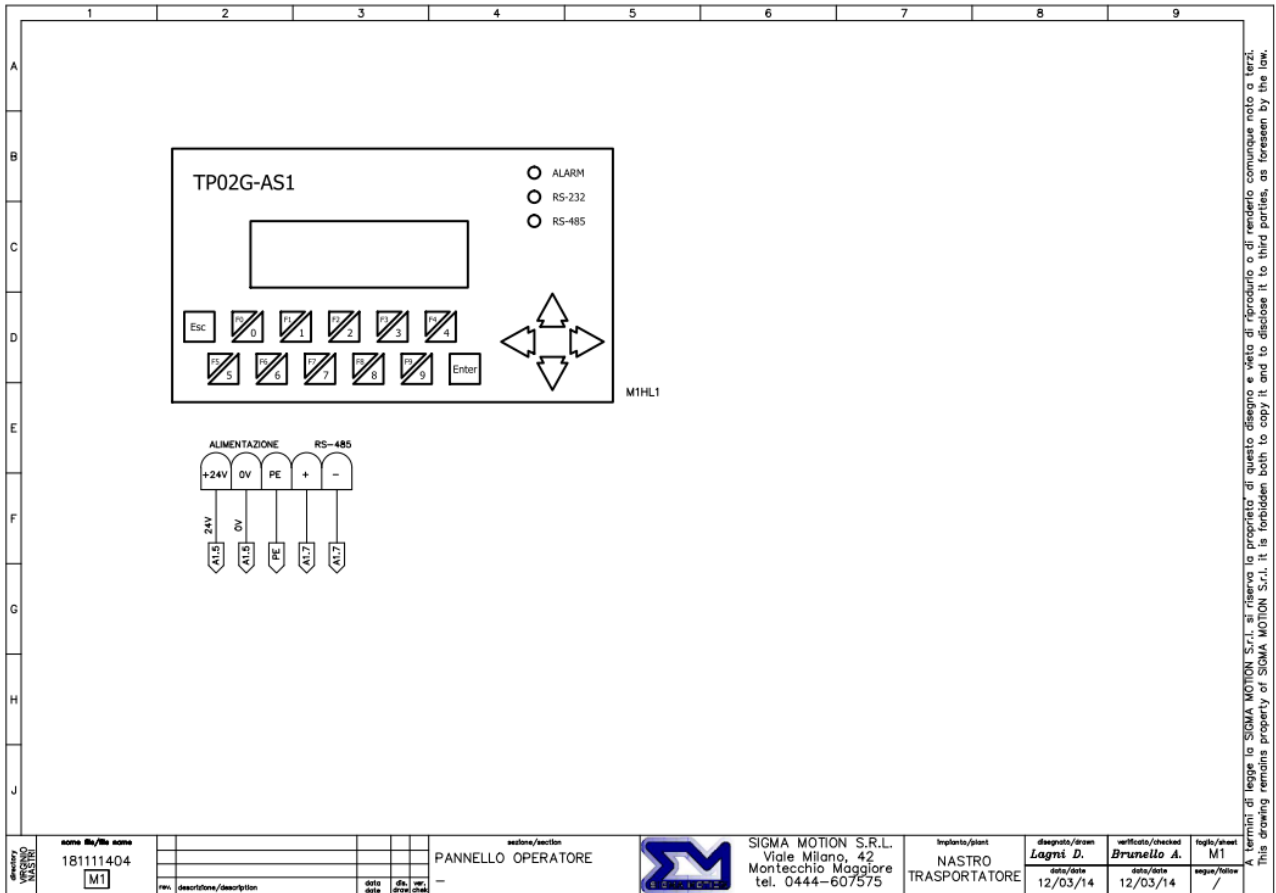
*Accepted / Accettato*

*General Comments / Commenti*

<i>Stromkreis</i>	<i>Voltage / Tensione</i>	<i>Wire Color / Colore fili</i>	<i>Common wire color / Comune colore fili</i>
Main circuit / Circuito principale	1~+N 230 V 50 Hz		
Auxiliary devices W.St. / Circuiti ausiliari W.St.			
Auxiliary devices G.St. / Circuiti ausiliari G.St.			
External circuit / Circuiti esterni			
Neutral / Neutro			
Ground / Terra			



A termini di legge la SIGMA MOTION S.r.l. si riserva la proprietà di questo disegno e vieta di riprodurlo o di renderlo comunque noto a terzi.  
 This drawing remains property of SIGMA MOTION S.r.l. It is forbidden both to copy it, and to disclose it to third parties, as foreseen by the law.



A termini di legge la SIGMA MOTION S.r.l. si riserva la proprietà di questo disegno e vieta di riprodurlo o di renderlo comunque noto a terzi.  
 This drawing remains property of SIGMA MOTION S.r.l. It is forbidden both to copy it, and to disclose it to third parties, as foreseen by the law.